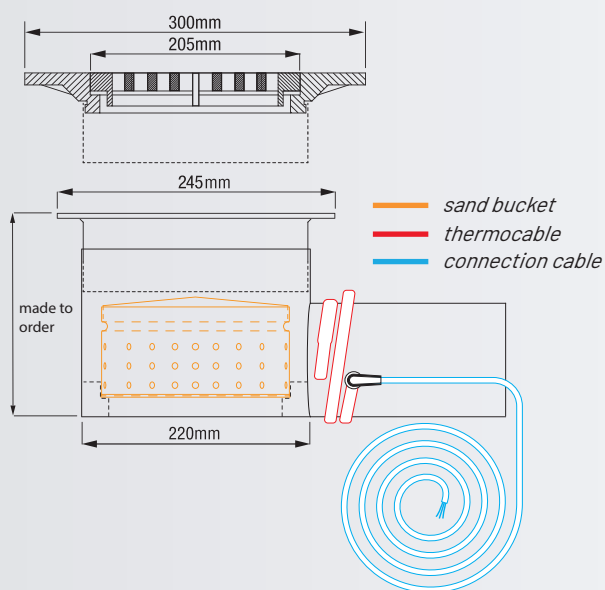


# Surface drain

## PVK

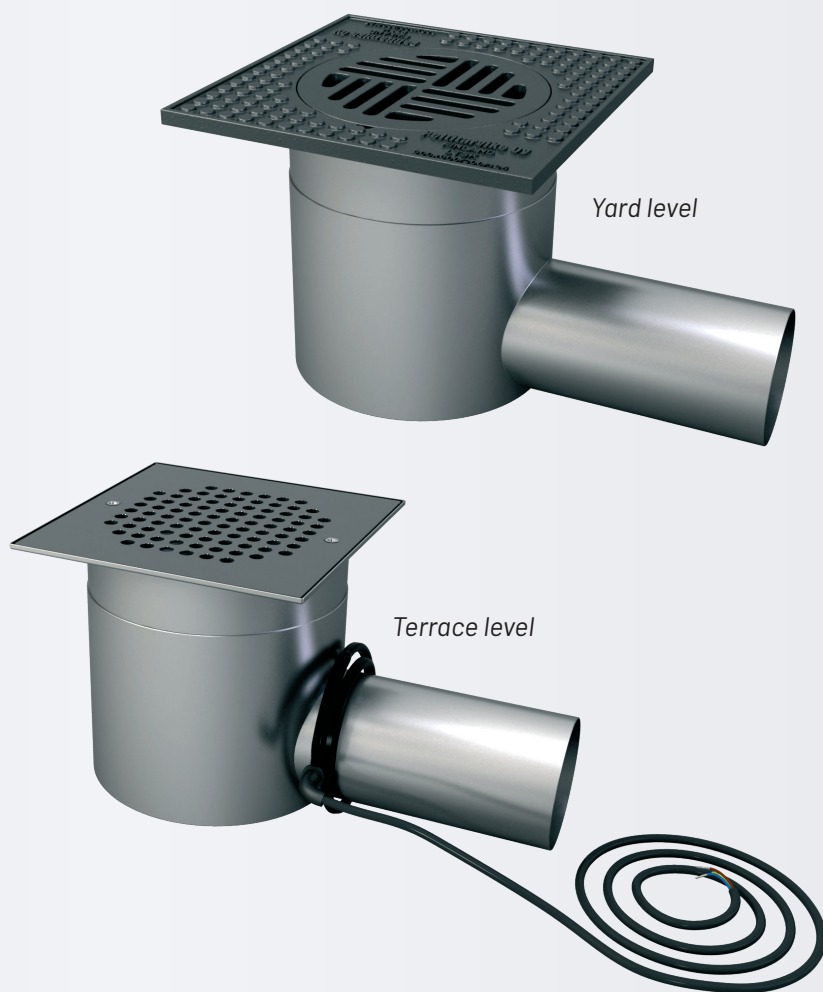


Cast iron grate Ø 250 mm

Cast iron grate frame 300x300 mm

Steel grate 240x240 mm

Steel grate frame 245x245 mm



## Drain for the surface water removal of courtyards

- Made of acid-resistant steel.
- Grate made of acid-resistant steel or cast iron (25 t).
- Two-part extension ring. Adjustment range 50 mm.
- Horizontal outlet (max. Ø 110 mm).
- Includes a sand bucket.

### Accessories

- Self-adjusting thermocable (16W/32W)
- Condensation insulation (13 mm cellular rubber)
- Cast-in supports

### Maintenance instructions

Empty and clean the sand bucket.