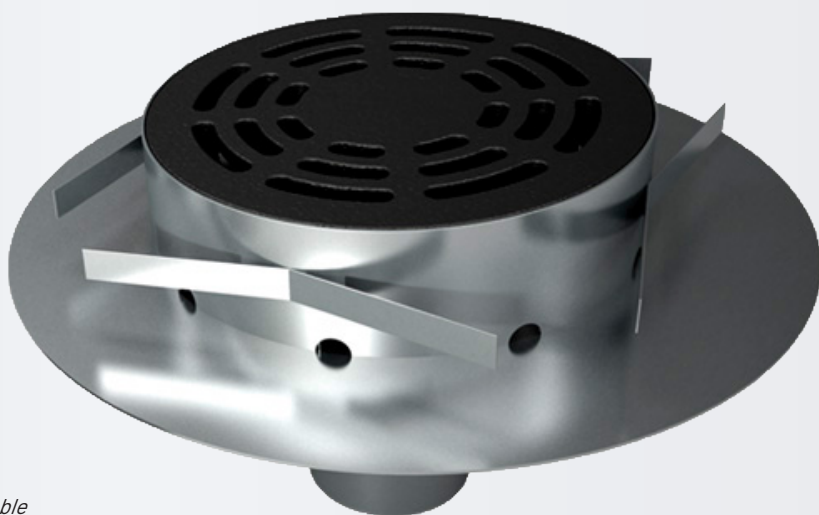
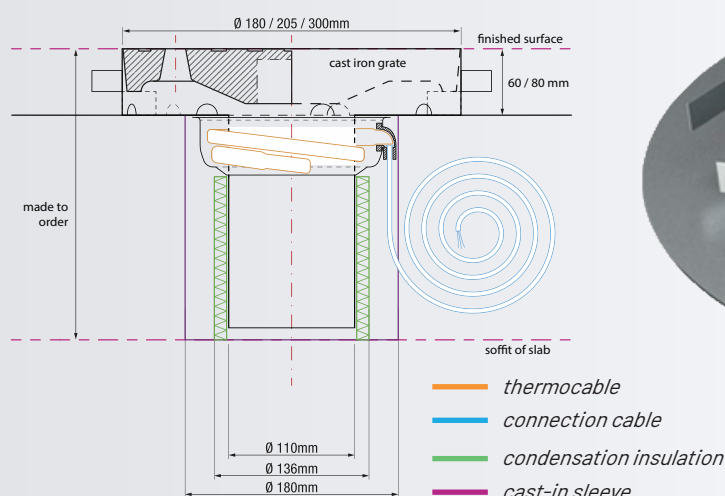


Stormwater drain



Grate

Diameter Ø	Flange diameter Ø	Load capacity
180 mm	320 mm	40 t
205 mm	410 mm	25 t
300 mm	490 mm	40t

Stormwater drain for drainage of concrete decks

- Made of acid-resistant steel.
- Grate made of cast iron.
- Equipped with cast-in supports, cast-in sleeve and openings at the bottom of the frame
- With cast-in sleeve, drain can be installed inside the concrete formwork.

Accessories

- Self-adjusting thermocable (16W/32W)
- Condensation insulation (13 mm cellular rubber)