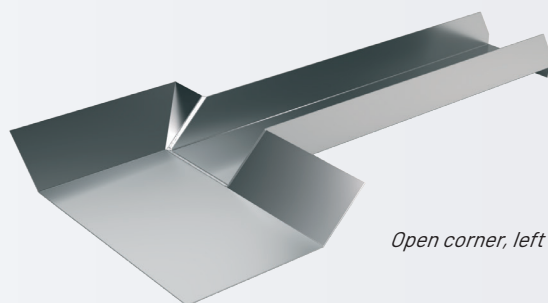
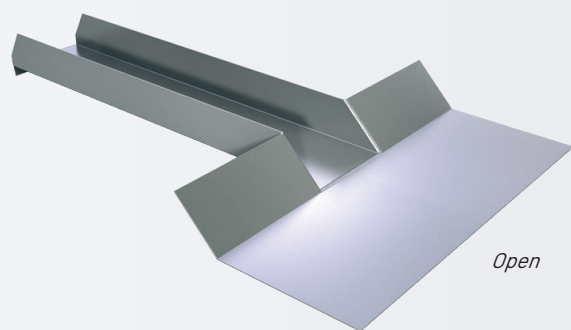
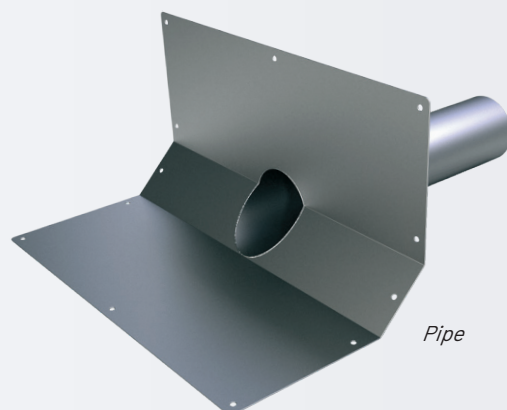
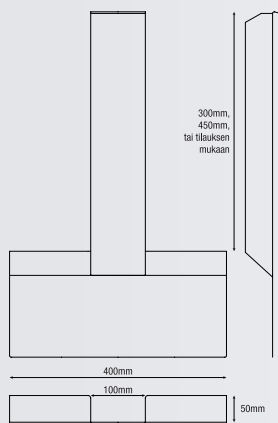
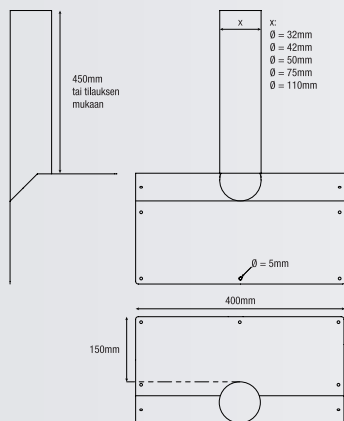


Scupper



The handing of the scupper is determined when looking from the roof towards the eaves. If the scupper is needed on the left corner, select the left-hand scupper; if it is needed on the right corner, select the right-hand scupper.

- Scuppers remove water from the roof in case the primary roof drains become clogged. Each roof with the roof drains shall have at least one scupper.
- Made of acid-resistant steel, aluminium or copper.
- Scupper made of acid-resistant steel have primed flange.