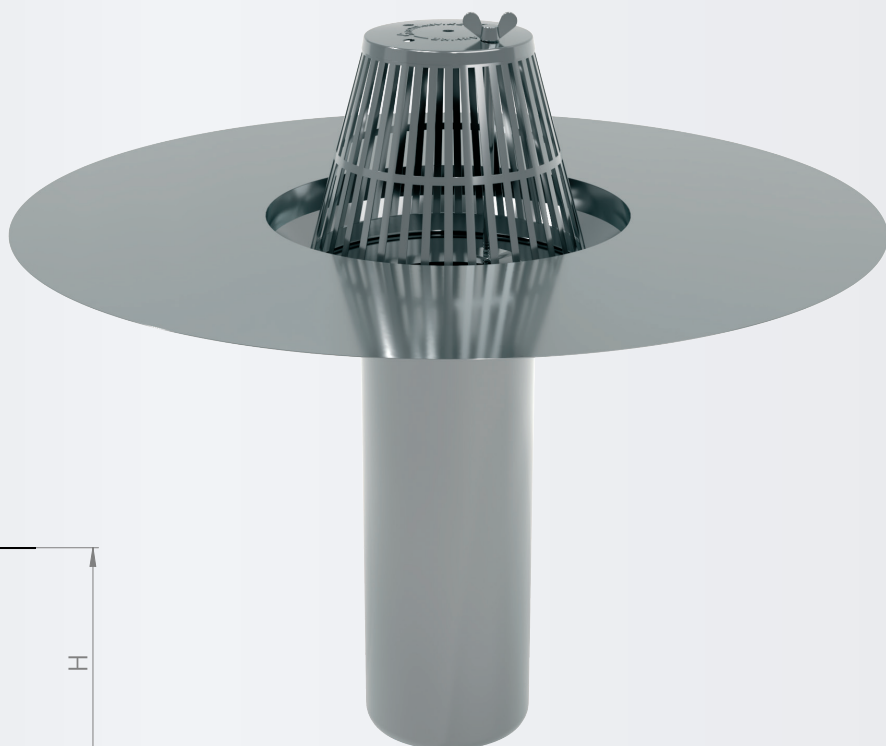
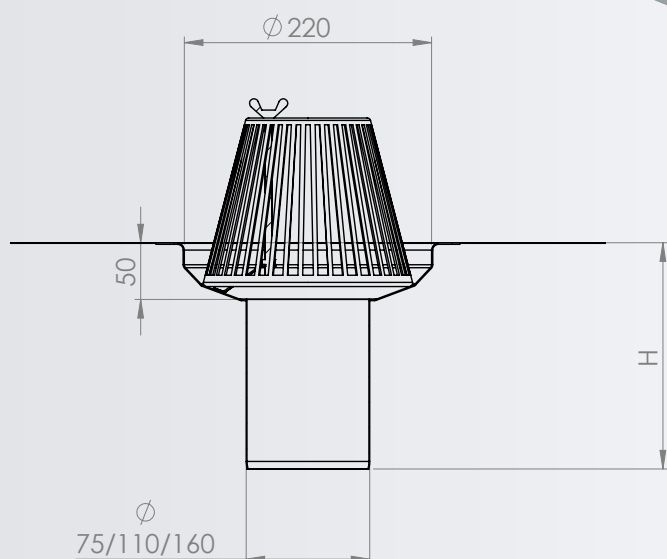


Roof drain

Model A



Standard pipe heights (H) available up to 1200 mm.
Other sizes are made to order

The European Committee for Standardisation CEN has not defined a harmonised standard (hEN) for roof drains that would allow the product to be CE marked. The product suitability is verified with site-specific validation.

Roof drain with collecting basin for flat roofs

- Made of acid-resistant steel or copper.
- Drains made of acid-resistant steel have primed flange.
- Includes a leaf grate with screw for mechanical attachment.

Accessories

- Self-adjusting thermocable (16W/32W)
- Condensation insulation (13 mm cellular rubber)
- Bitumen flange

Maintenance instructions

Check and clean the leaf grate. Other maintenance needs according to the roof maintenance book.