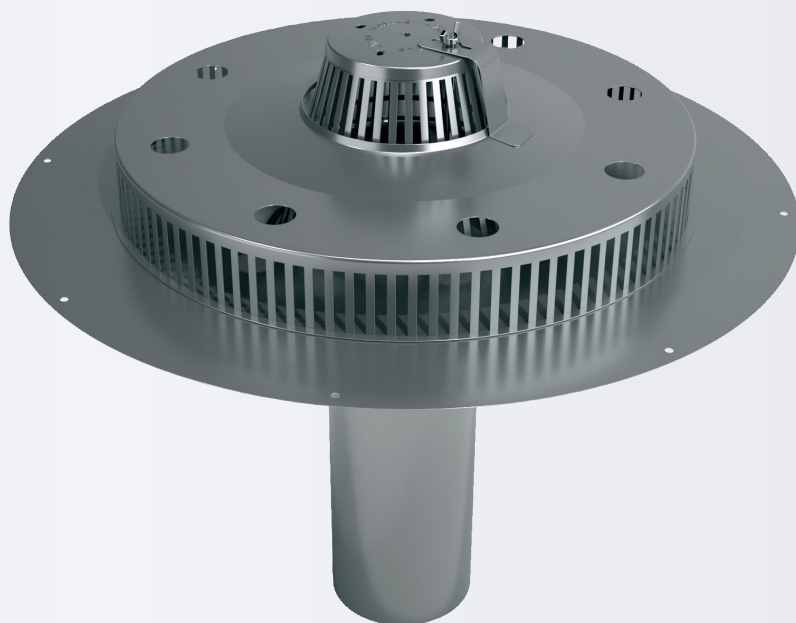
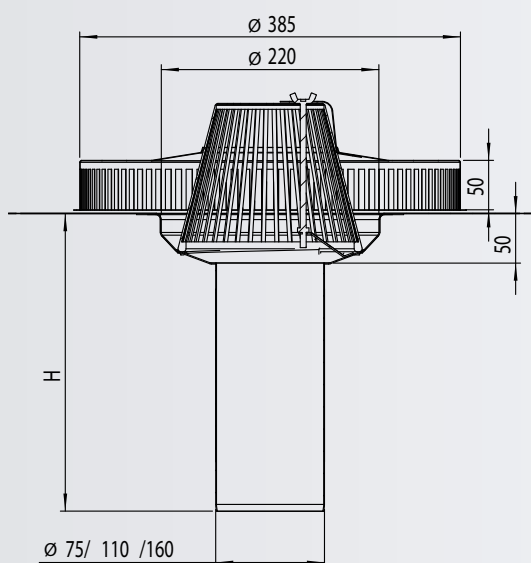


Roof drain Model A Max



Standard pipe heights (H) available up to 1200 mm.
Other sizes are made to order.

The European Committee for Standardisation CEN has not defined a harmonised standard (hEN) for roof drains that would allow the product to be CE marked. The product suitability is verified with site-specific validation.

Roof drain with double grate for flat roofs

- Made of acid-resistant steel.
- Drains have primed flange.
- The double grate consists of leaf grate A and additional grate A.
- The additional grate A, which locks onto the wing nut of the leaf grate A with a simple twist mechanism, prevents the drain from clogging even more effectively.

Accessories

- Self-adjusting thermocable (16W/32W)
- Condensation insulation (13 mm cellular rubber)
- Bitumen flange

Maintenance instructions

Check and clean grates. Other maintenance needs according to the roof maintenance book.