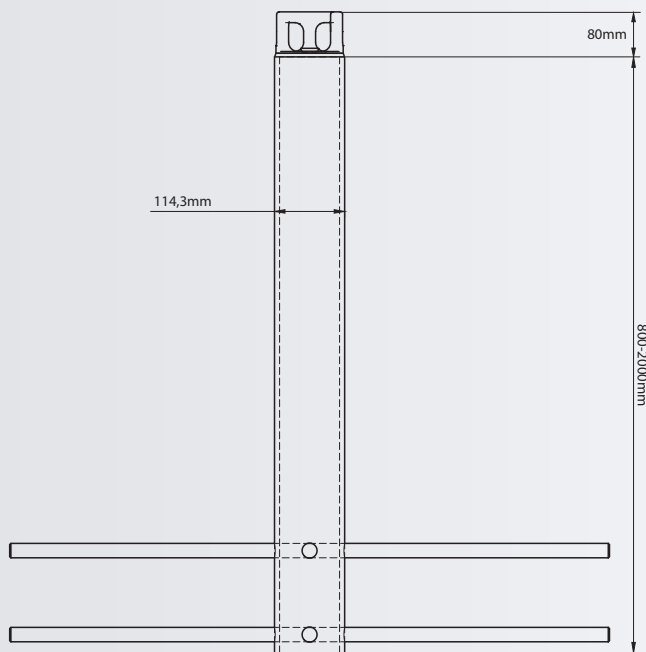
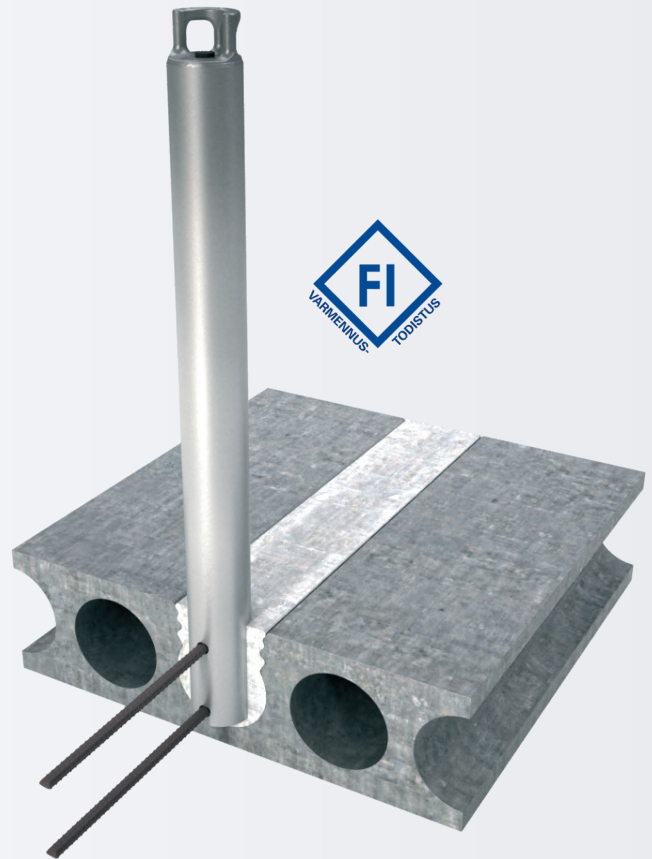


PITO™ cast-in anchor post

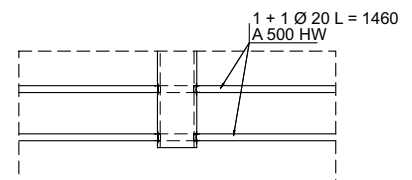
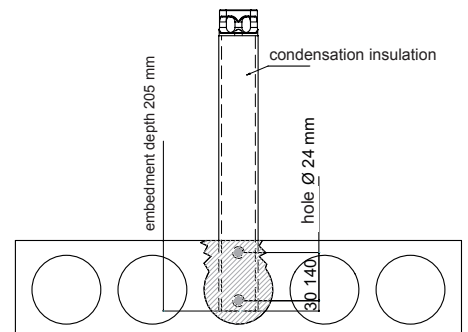


Pipe height 800, 1000, 1100, 1200, 1400, 1600, 1800 or 2000 mm



Robust roof anchor post for fall protection

- Made of steel, hot-dip galvanised and the pipe is condensation insulated on the inside.
- Suitable for hanging suspended scaffolds and for personal fall protection as a single anchor point or as a cable point of PITO™ Greenline lifeline system.
- Approved for four simultaneous users.
- Maximum live load 5 kN.
- Fastening by casting into a hollow-core slab. Fasteners available through Peltitarvike.
- The loop must be dimensioned at least 300 mm above the roof.
- Painting is available for the anchor post through Peltitarvike.
- Tested according to suspended access equipment standard SFS-EN 1808 + A1 and personal fall protection equipment standard EN 795:2012.
- PITO™ anchor posts have a Kiwa Inspecta certification for construction products.



Fastening to hollow-core slab, det 3

Version 15/2025